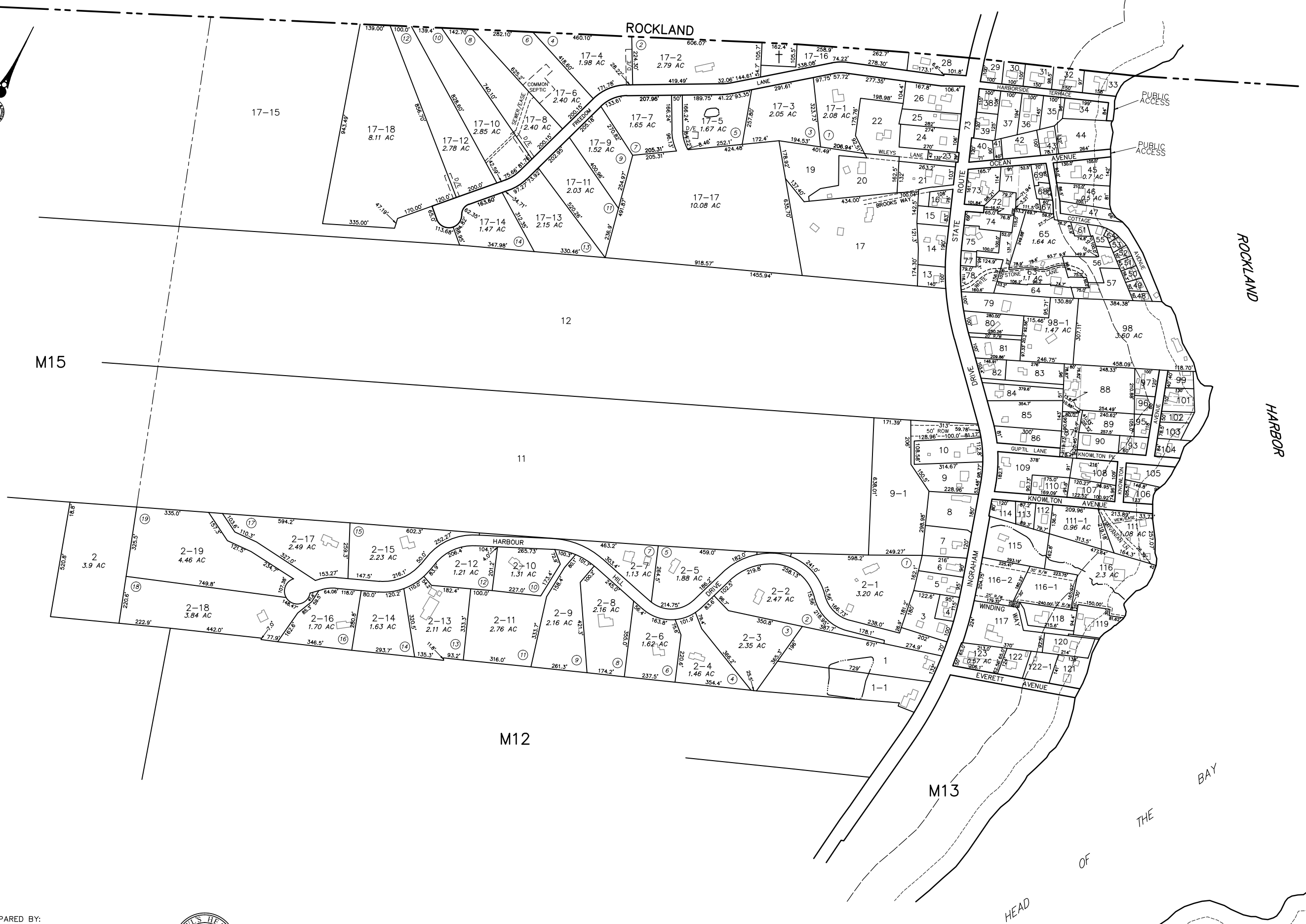


M15



M12

M13

M13

PREPARED BY:
AERIAL SURVEY AND PHOTO, INC.
546 AIRPORT ROAD PO BOX 659
NORRIDGEWICK, MAINE 04957
TEL: 207 634-2006 FAX 207 634-2008

NOTE
THIS MAP IS FOR ASSESSMENT PURPOSES ONLY
AND IS NOT INTENDED FOR PROPERTY CONVEYANCE
OR LEGAL DESCRIPTION.



TOWN OF OWLS HEAD
PO BOX 128, 224 ASH POINT DRIVE
OWLS HEAD 04854
207 594-7434

MAP LEGEND

PARCEL NUMBER	74	PARCEL BOUNDARY	—————
PARCEL DIMENSION	181.21'	ROAD RIGHT OF WAY	—————
PARCEL AREA	2.456 AC	INTERNAL LOT LINE	—————
BUILDING FOOTPRINT		LAND TRUST/CONSERVANCY	—————
MATCH LABEL	PO MAP 207 LOT 42	EASEMENT LINE	—————
SUBDIVISION LOT NUMBER		PRIVATE RIGHT OF WAY	—————
ADJACENT MAP	M14	WETLAND EDGE	—————
SHORELAND ZONE/75' SETBACK	—————	WATER LINE	—————

APRIL 1, 2019
SCALE 1 INCH = 200 FEET
MAINE STATE PLANE COORDINATE GRID; EAST ZONE; NAD 1983; US FEET

PROPERTY MAP
TOWN OF OWLS HEAD
KNOX COUNTY, MAINE
16